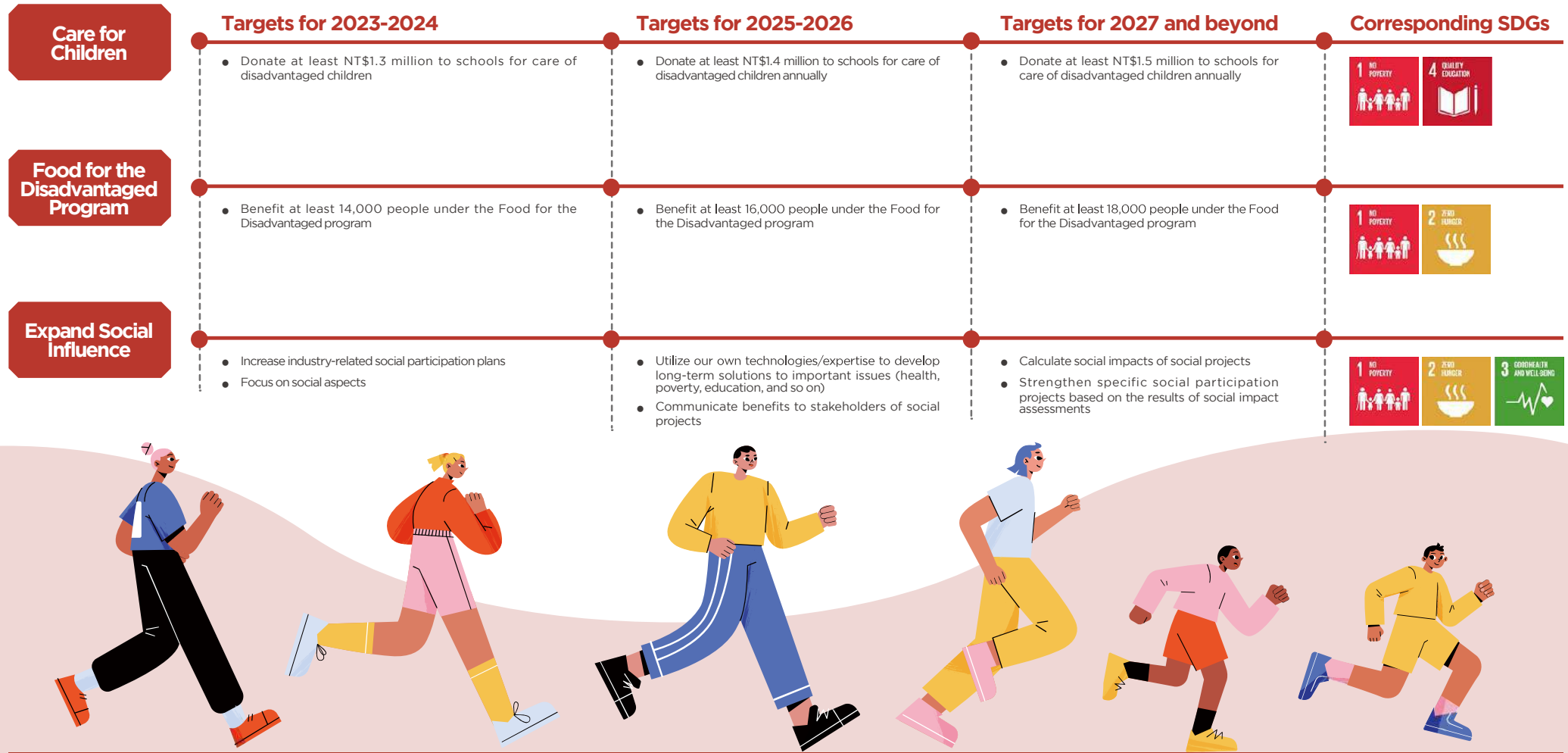


CH5

Social Prosperity

Target Formulation



Local Creations Grape King Bio: Supporting Local Mushroom Industries Through Mushroom Production Wufeng Shiitake Mushroom Support Program



The indigenous people of Wufeng Township in Hsinchu County have raised shiitake mushrooms for generations, but these mushrooms require high investments and can only be harvested every ten months. Additionally, the hard work of these indigenous people are often wasted due to lack of marketing and sales channels. In recent years, younger generations have gradually migrated out of the township, leaving only the elders in Wufeng to support this industry. After learning about this situation, Grape King Bio Chairman Shenglin Andrew Tseng decided to utilize Grape King Bio resources to assist Wufeng Township in promoting their mushroom industry, ensuring that this valuable specialty could continue to be passed on for generations.

Grape King Bio has long been committed to food safety and quality improvements, and also possesses an abundance of professional talents and knowledge capabilities. In order to gain a comprehensive understanding of the shiitake mushroom industry in Wufeng and provide relevant assistance, Grape King Bio initiated the “Wufeng Shiitake Mushroom Support Program” in 2020. 2022 marks the third year of this program. In future, we plan to continue working with local farmers to support the shiitake mushroom industry.

Year	Approaches	Projects	Performance Summary
2021	Grape King Bio Academy	View and emulate for upgrading the quality	Hold one visit and provide quality tutorship to 20 mushroom farmers
		Tutorship by experts	Help diagnose mushroom farms once, and provide quality tutorship to 3 mushroom farmers Attend one mushroom evaluation contest, and pick top four best quality
	Products Value Recreation	Gift boxes for festivals	Launch 600 boxes
		Agricultural Recreation trip	Participate in one trip
	Campaign video promotion	Publicize on Facebook fan page	Hold a series of marketing activities
Campaign video		Film a campaign video	
2022	Products Value Recreation	Gift boxes for festivals	Launch 500 boxes
	Campaign video promotion	Publicize on Facebook/Instagram fan page	<ul style="list-style-type: none"> Achievement by holding a series of marketing activities: 15% growth in number of followers Number of people reached on fan page : 135,312 people Regular posts on fan page : 20 posts <ul style="list-style-type: none"> Number of liked : 1,002 likes Number of comments : 886 comments Number of shared : 628 times
		Transition plan of Crops	Dried Ganoderma space bag

Our implementations in 2022 encompassed three prongs to guide agricultural transformation of mushroom farmers in Wufeng: Restructuring product values, marketing through videos, and transformation of economic crops. During this period, we invested the resources from 13 professional units and 326 person-hours in this project. We sold 500 co-branded gift boxes through our sales channels, implemented promotional activities on our fan pages, and tested Ganoderma vacuum seal packs. The scope of our project included mushroom farmers, products, and brand image promotions.

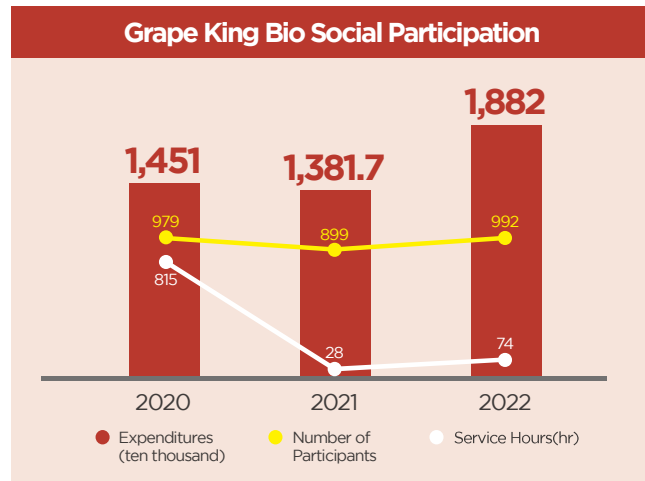
In future, we will continue to support mushroom farmers in Wufeng by effectively using corporate resources and sharing corporate management mechanisms to promote the mushroom industry in Wufeng and build social influence.



詳情可見

Social Inclusion

We are committed to providing financial aid and learning resources to disadvantaged groups in society, and work to utilize our advanced bioscience technologies in continued research, development, and creation of products that will benefit society. We also plan to host and participate in various charitable activities to raise employee awareness of and involvement in social welfare. Grape King Bio social participation investments for the past three years are shown in the following table:



Note 1: Includes expenditures for donations to government institutions, other clubs, and community charity expenses.
 Note 2: Includes expenses from the Tseng Shui Chao Welfare Charitable Foundation.
 Note 3: Physical activities and service hours were reduced in 2021 due to the pandemic.

Grape King Bio Employee Participation

Grape King Bio is active in social participation and formed the Grape Volunteer Team in 2013, gathering like-minded employees to participate in volunteer activities. Volunteer activities were hosted during work hours and our senior managers led our colleagues in performing volunteer tasks. A total of 992 volunteers and 74 service hours were invested in community investment projects in 2022. All volunteer activities were canceled in 2022 due to the pandemic. Social participation at Grape King Bio falls into five core focuses that form the cornerstone of our fulfillment of corporate social responsibilities.

Our philosophy for social investment: "Local investment, social contributions, and building social influence."

1. Academic participation and strengthen competitiveness of future key talents
2. Community development and provide local support and care
3. Care for the disadvantaged and provide resources and counseling
4. Companionship and assistance to enhance daily living
5. Care for the elderly and emphasize needs of senior citizens

Focus	Academic Participation	Community Development	Care for the Disadvantaged	Companionship and Assistance	Care for the Elderly
Targets	Disadvantaged schoolchildren and adolescents	Neighboring communities around factories	Disadvantaged groups	<ul style="list-style-type: none"> Individuals striving for independence Women and children suffering from trauma Physically or mentally disabled individuals 	The elderly
Assistance Provided	<ul style="list-style-type: none"> Financial support Community sponsorships Scholarship 	<ul style="list-style-type: none"> Long-term provision of local services Support for schools and other institutes Long-term care from volunteer teams 	<ul style="list-style-type: none"> Material and financial donations Meal support and rural companionship 	<ul style="list-style-type: none"> Companionship and respite services Independent living projects 	<ul style="list-style-type: none"> Care for the needs of elders and provide warm companionship Enrich life activities
Social Influence	Enhance local children's right to education	Promote mutual growth by providing assistance to local neighboring communities	Reduce inequality of social resources	Improve living standards for disadvantaged groups	Improve the health and wellbeing of the elderly



5.1 Academic Participation

5.1.1 Student Internships and Exchanges

We actively provide field trip opportunities to colleges and universities, and internships for winter/summer vacations and during semesters. A total of 228 students have interned at our factories over the past three years. This added to our intangible assets, allowed us to pass on our expertise to young students, helped students align with industry needs, and gave us a chance to screen and recruit excellent new employees. Currently, 15 of our previous interns have become full-time employees following graduation. The number of interns at Grape King Bio factories over the past three years are shown below:

Year	2020	2021	2022
Winter Vacation	18	20	23
Summer Vacation	42	0	40
During Semesters	28	25	32



5.1.2 Seed Talent Program (STP)

Grape King Bio emphasizes talent cultivation. Our Seed Talent Program (STP) provides young college and university students with opportunities to directly work on industrial projects while strengthening industrial-academic links. Our chairman personally guides Grape King Bio colleagues in leading students through all project stages from proposal to implementation, enabling them to gain practical experiences beyond academic textbooks. This program was initiated in 2014. As of 2022, a total of 126 interns have participated in this program and worked on 23 projects.

Each batch of student teams is given different topics that they work on from activity planning, design, production, and execution so that they can fully understand each implementation process and develop problem-solving capabilities. This year, we continued to support Wufeng using our fan page and raffle events to promote shiitake mushrooms.

Results for 2022:

- ◆ One batch of students
- ◆ Number of interns: 6
- ◆ Participating supervisors and units: Chairman, General Manager's office, ESG Committee (Social Welfare Implementation Team), Marketing Planning Section

5.1.3 Academic Sponsorships to Support Education for Schoolchildren

Starting from 2007, we at Grape King Bio made it our mission to care for local schoolchildren. We donate to the emergency relief funds of elementary and middle schools (Long Xing Junior High School, Pingzhen Junior High School, Zhongli Junior High School, Lung Gang Elementary School, Beishi Elementary School, and others) each year, and have donated a total of NT\$6,250,000 as of year-end 2022. We are committed to helping disadvantaged schoolchildren gain an education, ensuring that their studies are not affected by external factors. We hope that our efforts can provide actual help to disadvantaged schoolchildren.

Grape King Bio Scholarships

We encourage talented youth from disadvantaged families to continue their studies and help to alleviate their worries. Grape King Bio scholarships for junior high and high school students were established in 2014 to support hardworking students. As of year-end 2022, we have sponsored a total of 15 high schools and 49 young students, donating a total of NT\$1,860,000 to help disadvantaged students continue to work hard on their studies. In future, we hope to expand our scholarships so that we can also help college students and ensure that talent cultivation is not limited by environmental factors as part of our contribution to society.

Sponsorships of School Clubs to Encourage Diversified Development of Schoolchildren

Talent cultivation is not limited to academic studies, and we also attach great importance to student participation in school clubs. We encourage diversified development of schoolchildren and work to expand the scope of sports and arts activities. We supported 11 schools from 2013 to 2022, donating a total of NT\$4,074,000. We sponsored the following school clubs in 2022:

- Pingzhen Junior High School orchestra
- Long Xing Junior High School innovation camp
- Zhongli Junior High School social club equipment
- Fu-Fong Junior High School volleyball team
- Ping Hsing Junior High School learning camp
- Lung Gang Elementary School parent-child activities and support program
- Beishi Elementary School food and agriculture club
- Dong An Junior High School and Longtan Junior High School counseling classes



“Mini Grape Camp” Workplace Experiences

Grape King Bio has hosted a number of parent-child workplace experience activities and organized the first “Mini Grape Camp” during the summer vacation of 2020. The children of our colleagues were invited to experience workplace environments at our Pingzhen Factory. Children are always curious about where their parents work, so this creative “Mini Grape Camp” event allowed the children of our employees to understand Grape King Bio’s culture as well as the environment and location where their parents work. On the day of this event, we not only introduced Grape King Bio, but also allowed these children to dress in clean room suits and experience air showers so they could understand their parents’ work conditions. At noon, we invited these children to our employee canteen to taste the catered meals, following which there was a visit to our Tourist Factory, a scavenger hunt which communicated health concepts, and DIY chocolate and ice-cream activities. Our Chairman presented certificates to the children who finished the scavenger hunt, and also took a group photo to commemorate the event.

Grape King Bio attaches great importance to the children of our employees and will continue to host “Mini Grape Camps” in future to bring happiness to these children. We continued to host the Mini Grape Camp in 2022 for a total of 33 attendees.



5.2 Community Development

5.2.1 Grape Volunteer Team

To promote social welfare, Grape King Bio formed the Grape Volunteer Team in 2013, gathering like-minded employees to participate in volunteer activities. Volunteer activities were hosted during work hours, and we provide flexible compensatory time for employees who are willing to participate in volunteer activities outside of working hours. Grape King Bio managers personally led the Grape Volunteer Team in performing volunteer tasks. In 2022, the Grape Volunteer Team temporarily suspended its outdoor activity for children with Down syndrome due to the pandemic. However, after pandemic conditions stabilized at the beginning of the year, we collaborated with Andrew Charity Association to sort and pack food boxes to feed disadvantaged children. The Grape Volunteer Team has organized an annual canvassing event since 2018, but we temporarily suspended canvassing of areas around our Zhongli and Pingzhen factories due to the pandemic. In future, we hope to continue hosting our canvassing events and fulfilling our corporate social responsibilities after pandemic conditions have stabilized.

5.2.2 Community Care

We consider it our responsibility to care for our neighbors. In previous years, we provided sites, manpower, material support, and electricity for physical examinations of residents near our Zhongli Factory to enhance the physical and mental health of residents in order to jointly build harmonious relations and interact with local communities in a positive manner.

Pandemic conditions gradually stabilized in the second half of 2022. We gave seasonal gifts to neighboring residents to create a festive atmosphere, and also resumed our scheduled activities, such as sponsorships of Moon Festival parties for neighboring regions and activities of community development associations to maintain sound interactions and relationships. This year, we resumed hosting blood drives for local residents and, for the first time, collaborated with the Zhenxing Village office to donate items to disadvantaged residents in hopes of expanding our contributions to the community. From an environmental aspect, our factories are located close to residential houses, which can raise different problems for different people depending on their perspectives. Grape King Bio attaches great importance to all reported grievances and works to improve and reduce impacts on surrounding regions to fulfill our corporate social responsibilities to local communities.

In 2022, our expenses for sponsorships and environmental improvement activities came to NT\$1,754,559. Over the past two years, some projects were canceled due to the pandemic. Our investment items and expenditures over the past three years were as follows:



	Item	2020	2021	2022
Sponsorships	Dragon Boat Festival Gifts	454,800	459,600	480,162
	Moon Festival Gifts	409,920	415,800	540,327
	Various Activities	169,950	87,018	251,070
	Multiple Benefits and Care Program	-	2,448,000	-
Zhongli Factory	Zhenxing Village-Moon Festival Cash Gifts	100,000	-	100,000
	Zhenxing Village-Elder’s Day Gifts	-	-	-
	Zhenxing Village-Community Safety	200,000	200,000	200,000
Pingzhen Factory	Beixing Village-Moon Festival Cash Gifts	100,000	-	100,000
	Beixing Village Appreciation Banquet	-	-	-
Subtotal		1,434,670	3,610,418	1,671,559
Environmental Improvements		445,483	223,000	83,000
Total		1,880,153	3,833,418	1,754,559

Environmental improvement investments for local communities:

1. Regular cleaning of ditches around factory areas in Beixing Village.
2. Festival gift-giving activities for surrounding communities.
3. Sponsored walks for the elderly and fun community sports meets for Longxing Village.
4. Zhongli Factory participated in activities to care for the disadvantaged in Zhenxing Village.
5. Sponsored Moon Festival dinner parties in Longxing, Longde, Zhenxing, and Beixing villages.

Faith for Animals (High-intensity stray sterilization project)

Starting in 2020, we began working with Faith for Animals to carry out a high-intensity sterilization project on stray dogs in Taoyuan City, which we hoped could help to sterilize stray female dogs, reduce problems caused by stray dogs, greatly lower social costs, and prevent countless animals from suffering. We achieved our goal of sterilizing more than 80% of stray female dogs in Taoyuan City. As of 2022, we have sterilized a total of 1,500 dogs.

2022 Christmas Wish project

Starting in 2017, Grape King Bio began hosting a series of Christmas events for children, seniors, disabled people, and women, to help beneficiaries of different institutes experience warmth and enjoy this festival. We hope that these events can bring more people together to care for disadvantaged groups and expand our social influence. As of 2022, we have assisted 89 organizations and more than 5,800 people, and donated a total of NT\$6.3 million.

Mother's Day pop-up charity event

We learned that roses handmade by Down syndrome individuals lacked a sales channel, so we organized an event which gifted flowers to elementary schools and invited our colleagues to support the "Chensenmei Social Welfare Foundation." These Mother's Day gifts taught young children about charity, helping others, cherishing what they have, and making contributions. We gifted 1,200 handmade flowers and worked with local elementary schools to make donations to students in 44 classes. As of 2022, we have assisted 5 organizations, 185 classes, and 5,505 people.

"Save the Earth with A Low-Carbon Diet" World Earth Day Activity

Starting in 2017, Grape King Bio began hosting "Save the Earth with A Low-Carbon Diet" activities at all factories. We began promoting concepts relating to low-carbon diets and environmental protection to our employees beforehand, and low-carbon lunches were served on World Earth Day and World Food Day. We also worked with "Ruth Society for Disability Services" on these days to source organic vegetables grown by individuals with Down syndrome. In 2022, we hosted 2 events in our factories which were attended by 911 people. As of 2022, a total of 2,933 people have participated in this event.

Other local community items in 2022 were as follows:

<p>Sponsored physical examinations Provided site, manpower, material support, and electricity for physical examinations of Zhenxing Village residents near the Zhongli Factory</p>
<p>Blood drives We have hosted blood drives since 2018. Borough heads of regions near our Zhongli Factory and Pingzhen Factory were invited to help us promote these events. As of 2022, we have cumulatively hosted 11 events attended by 881 employees and local residents, collecting 1,221 bags of blood.</p>
<p>Online charity stalls We invited local social welfare organizations in Taoyuan to set up online stalls on our website. A total of 3 organizations were invited (including the World Peace Association, Eden Social Welfare Foundation, and Ruth Society for Disability Services) to our 3 events.</p>
<p>Spreading love in the community Grape King Bio began purchasing handmade Moon Festival gift boxes from bakeries run by disabled people starting in 2018. We have now worked with 5 associations for disabled people. In 2022, we purchased 200 gift boxes from the Baby Development Center and gave these out to neighboring communities.</p>

Social Risks and Opportunities

In 2022, we used a scenario analysis chart of our management systems to identify the risks we pose to neighboring communities, which are listed in the table below:

Issues	Current Conditions	Actions and Measures	Category	Impact Level	Likelihood of Occurrence
Noise control and improvements	Noise and odor issues at our Pingzhen Factory caused concern for nearby residents, who began actively monitoring relevant problems. In addition to complying with related laws, these residents hoped that Grape King Bio could go beyond legal requirements.	Nearby residents became concerned and began actively monitoring relevant problems. In addition to complying with related laws, these residents hoped that Grape King Bio could go beyond legal requirements and set a good example. We will continue to communicate with neighboring communities on relevant issues.	Opportunity	High	Medium
Prevention of water pollution	Wastewater discharged from our Pingzhen Factory complied with legal regulations, but nearby residents expressed an interest in and still continue to monitor the results of tests conducted on samples of discharged water.	We require wastewater treatment vendors for Pingzhen Factory to strengthen monitoring of discharged water and conduct monthly tests of discharged water samples in accordance with requests from nearby residents.	Risk	High	Medium
Noise control and improvements	Residents near the Pingzhen Factory raised concerns regarding noise caused by packing and cleaning procedures	We changed our cleaning site to avoid disturbing the residents	Risk	High	Medium

Out of our three factories in Taiwan, the manufacturing processes at Zhongli Factory produce the least amount of waste and wastewater. Therefore, this factory faces fewer problems from neighboring communities. Our Longtan Factory is located within the Longtan Science Park and is surrounded by other factories which all comply with science park administration regulations. Therefore, this factory also faces lower community risks and opportunities. However, the manufacturing processes at Pingzhen Factory generate large amounts of waste and produce odors. Although all emissions are within regulated levels, the factory is located close to residential areas, so may affect residents and create community risks. In future, Grape King Bio will work to create mutual prosperity with local communities; improve our manufacturing processes to reduce waste, wastewater, and noise; and continue to communicate with local residents to transform risks into better opportunities.

5.3 Care for the Disadvantaged



5.3.1 Food Assistance

Meal Packages

Starting in 2017, Grape King Bio began working with Andrew Charity Association to make regular donations of foods and other resources. As of 2022, we have donated a total of 2,900 food and resource boxes, helped 2,900 families, and assisted 11,600 people.

Winter and Summer Vacation Meal Coupons

Schools are closed during winter and summer vacations, and therefore no school lunches are provided. Starting in 2018, Grape King Bio began working with the World Peace Association, providing donations to set up meal services for disadvantaged children during the winter and summer vacations, enabling them to redeem food coupons for regular meals so that they would not go hungry. As of 2022, we have assisted 346 students and supplied 12,330 meals.

Charity Breakfast Program

Starting in 2020, we began supplying nutritious daily breakfasts to disadvantaged children and youth living in rural areas of Tainan City by donating NT\$50 each day to purchase their breakfasts, providing them with breakfasts during the semester, weekends, and summer and winter vacations so they could maintain their strength for learning, enhance their learning capabilities, and increase their future competitiveness. In 2022, we made donations to 25 disadvantaged children in 3 schools and provided 9,125 meals. As of 2022, we have assisted 346 disadvantaged children and supplied 24,820 meals.

5.3.2 Medical and Healthcare Assistance

Annual program for epidermolysis bullosa patients

Starting in 2019, we began supporting Dystrophic Epidermolysis Bullosa Research Association Taiwan, collecting medical items required by patients with moderate to severe epidermolysis bullosa and providing home care services for patients with severe epidermolysis bullosa to reduce the burdens on their families. As of 2022, we have assisted 1,780 people.

Monetary donations

Starting in 2017, we began supporting the privately owned Canaan Disability Home in Pingtung County, providing funds to buy daily necessities for severely disabled people. As of 2022, we have assisted 216 people.

Sing Fu Happiness Foundation in Taoyuan City-Meal program for individuals with Down syndrome

We helped to purchase a large fridge to store food at the Foundation so that their Down syndrome residents could enjoy fresh and healthy foods. The fridge was big enough to provide daily meals for 80 Down syndrome residents and 40 foundation employees, enhancing the health and life quality of everyone living at the foundation.

New Dawn Facility-Subsidy program for facilities and equipment

We helped to create a safe, friendly, and loving environment for residents of New Dawn Facility by subsidizing replacements of old and expired fire extinguishers to aid rapid control during the initial stages of a fire, thereby preventing disasters from occurring.

Medical Resources Subsidies

Grape King Bio worked with the Huizhong Medical Relief Foundation to provide medical subsidies to disadvantaged patients at the Taipei Veterans General Hospital Taitung Branch so they could enjoy equal opportunities for healthcare even though they were unable to pay their medical expenses.

5.3.3 Learning Support for Rural Regions

Reindeer Island Tour

Starting in 2016, Grape King Bio began collecting Christmas boxes for disadvantaged schoolchildren in rural schools through the “Reindeer Island Tour” project to provide mental support for these children and promote moral education while spreading warmth and happiness. We also funded facilities required by rural schools to fill resource shortages. As of 2022, we have donated 612 Christmas boxes to 612 people, and purchased facilities and equipment for 18 rural schools.

Companionship for Orphans

In 2022, we supported physical and mental development needs of orphans by cutting down on group activities and educational models, emphasizing personal characteristics and individualized development plans. We renovated old orphanage buildings and gradually created a secondary location for orphanage residents to expand their activity space and increase their future competitiveness. In 2022, we made donations to 25 disadvantaged children in 3 schools and provided 9,125 meals. As of 2022, we have assisted 346 disadvantaged children and supplied 24,820 meals.



5.4 Companionship and Assistance

5.4.1 Care and Independence for Disabled People

Companion Care And Respite Services

Grape King Bio hosted a series of “Companionship & Respite” activities starting in 2013 and provided volunteer companions for individuals with Down Syndrome. This not only provided opportunities for positive social interactions, but also helped institute caregivers. As of 2020, we have assisted 497 people and supplied 1,851 hours of voluntary service. We temporarily halted “Companionship & Respite” activities in 2022 due to the pandemic and instead donated epidemic prevention materials to disadvantaged people.

Other items related to care for disabled people in 2022 were as follows:

Canaan Disability Home

Canaan Disability Home cares for severely disabled patients from disadvantaged families. Starting in 2017, Grape King Bio helped these patients with Down syndrome plant gardens and participate in green healing classes by planting of fruit trees. These patients weeded, plowed soil, applied fertilizer, and achieved green healing by caring for their farms. As of 2022, we have assisted 216 people.

Arts promotion for disabled people

Starting in 2020, Grape King Bio began making donations to the Arts Promotion Association for the Disabled R.O.C. to support accessible arts and provide diversified employment opportunities for disabled people. As of 2022, we have assisted 402 people.

Equipment for care services

In 2022, Grape King Bio worked with the Eden Social Welfare Foundation to purchase white canes for the Visually Impaired Service Department, providing assistive devices for visually impaired individuals. We plan to provide these aids to all visually impaired people in Taoyuan City, and expect to assist 210 people each year.

Diversified Course Program for Babies

Starting in 2021, Grape King Bio began working with the privately owned Taoyuan City Baby Development Center to help disabled children in Taoyuan City access a comprehensive range of resources for special education. We built a team which integrated healthcare, education, social administration, and a multitude of other disciplines so that children under the age of 6 could receive early intervention during this golden period. We hired three professional therapists to provide functional, physical, and language support, as well as individual assessments and professional advice which can help disabled children develop their full potential, align with normal learning tracks, and showcase their own brilliance. As of 2022, we have assisted 80 people.



Experiential Activities and Wishlists for Disadvantaged Schoolchildren

When providing support to local schoolchildren, Grape King Bio discovered that many disadvantaged schoolchildren came from families who could not afford to pay school fees and were unable to give these children normal childhoods. Therefore, we began organizing “Mini Grape One-Day Tour” experiential activities starting in 2014, enabling schoolchildren to experience diverse lifestyles, build their confidence, and cultivate gratitude and care for others. These activities enhanced parent-child interactions and gave the children hope for the future. We also began organizing “Wishlist” activities starting in 2016 to fulfill the wishes of these disadvantaged schoolchildren, bringing them hope for the future and helping to provide them with daily necessities. As of 2022, we have assisted 582 people.

Ti-Hwei Children’s Home

Ti-Hwei Children’s Home is a private orphanage located in Tianmu (Taipei) which attaches great importance to sports education and believes that children should learn by doing and reflecting. They host outdoor adventure camps every year during the summer vacations to help their residents learn independence. Grape King Bio began supporting these experiential camps in 2015. Each year, our colleagues serve as corporate volunteers and participate in these activities alongside the children. Additionally, as some children may be facing career planning problems, we arranged for our corporate volunteers to conduct two talks where they shared career information, helping these children better understand related occupations. We temporarily halted our summer growth camps in 2022 due to the pandemic and instead donated epidemic prevention materials to the orphanage. As of 2022, we have assisted 95 people, invested 804 volunteer service hours, and donated NT\$3,380,000.

In 2022, we supported the physical and mental development needs of orphans by cutting down on group activities and educational models, emphasizing personal characteristics and individualized development plans. We renovated old orphanage buildings and gradually created a secondary location for orphanage residents to expand their activity space.

In 2022, we made donations to family planning programs. Social welfare is moving toward smaller institutes, family-style management, and reduction of group activities and education models, emphasizing personal characteristics and individualized development. We are gradually helping Ti-Hwei Children’s Home separate living quarters for boys and girls, as well as educate children separately based on age differences.

disadvantaged schoolchildren, bringing them hope for the future and helping to provide them with daily necessities. As of 2022, we have assisted 582 people.

5.4.2 Self-Reliance for Women

Care and Assistance for Abused Women

In recent years, the topics of sexual assault and domestic violence have received increasing attention. Grape King Bio worked with the Taipei Women's Rescue Foundation and Garden of Hope Foundation to provide assistance and support by hosting lectures related to law and psychological support. We have also hosted long-term companionship workshops to help abused women become self-reliant. As of 2022, we have assisted 461 people. In 2022, we supported the Garden of Hope Foundation and helped women realize their strengths and support each other through annual returns to their parental homes. These activities helped the women understand that they were not alone, established a support system, and encouraged them to build brighter futures.



5.5 Care for the Elderly

5.5.1 Care for Seniors

Starting in 2018, Grape King Bio assisted the Hondao Senior Citizen's Welfare Foundation in extending their safety net to provide care for the hungry and malnourished. We also delivered meals for elderly people living in 11 administrative districts in Taichung City who were underprivileged, lived alone, or had mobility issues. As of 2022, we have assisted 69 elders and supplied 8,574 meals.

Grape King Bio also continues to support the Hondao Senior Citizen's Welfare Foundation in promoting sports activities for elders and encouraging seniors to exercise. We formed a baseball league platform and formulated competition rules for elders, giving them a chance to leave their homes and step into baseball stadiums. We began hosting baseball tournaments for seniors starting in 2019, and our colleagues also formed teams to play against these seniors. As of 2022, we have hosted 3 games, assisted 157 people, and invested 152 service hours.

5.5.2 Companionship for Lunar New Year

Grape King Bio provides care to disabled, demented, and dependent seniors. We have continued to care for disadvantaged seniors living alone since 2016. Our volunteers care for and visit these seniors, personally delivered Lunar New Year meals, and assisted the Huashan Social Welfare Foundation in organizing a year-end banquet so that these seniors could feel our love and care on the eve of Lunar New Year. As of 2022, we have assisted 2,124 people, and made cumulative donations of NT\$2.31 million.

Starting in 2019, Grape King Bio launched "Happy Charity Boxes" containing worship items for Ghost Festival. We have also worked with Huashan Social Welfare Foundation for four consecutive years to assist elders living alone in communities around our Pingzhen and Zhongli factories, providing meal assistance to elders living in Jinling Road and Longgang District to prevent them from going hungry. As of 2022, we have assisted 120 people.

In 2022, Grape King Bio worked with different organizations on the following senior care program:






Senior health program






Starting in 2021, Grape King Bio began working with Double Bliss Welfare and Charity Foundation to provide gym training for frail and demented seniors in the community, helping them to fend off or delay development of disabilities or dementia. We maintain a ratio of 3:1 for seniors and youth coaches while providing in-depth health and nutrition information that can effectively help to prevent disabilities and delay dementia.



5.6 Social Participation in Response to the United Nations Sustainable Development Goals (SDGs)

In 2022, we reviewed our social participation programs, social issues, and environmental issues, as well as their corresponding United Nations Sustainable Development Goals (SDGs).

SDGs	Issues	Project Titles	Project Description	Grape King Bio Investments
 	Disaster prevention and food banks	Spreading Love in Hometowns: Safety and Sustainability Project	The Mustard Seed Mission corresponds to SDG 13 (Climate Action) and SDG 11 (Sustainable Cities and Communities) as it works to integrate disaster prevention measures into daily life and establish effective community disaster assistance models, thereby enhancing public disaster response and preparation capabilities, as well as community resilience, recovery abilities, and rapid responses to disaster needs. We will plan and design suitable disaster prevention and relief models for the community that encompass enhancement of disaster response capabilities and establishment of mutual resource support networks, including establishment of community disaster food storage sites, cultivation of independent disaster prevention capabilities in the community, and disaster prevention education for children. Grape King Bio has supported the Atayal tribe in Nahuy (Hsinchu County) and the Atayal tribe at Balung (Taoyuan City Fuxing District) for 4 consecutive years, helping these isolated tribes establish disaster preparation and food storage sites that can provide the most immediate assistance to local residents in the event of a disaster.	500,000
 	Care for seniors	Senior Vitality Center 100,000 Meal assistance program 150,000 Seniors baseball league 100,000	In order to promote healthy aging, the Hondao Senior Citizen's Welfare Foundation has developed diverse sports venues that bring exercise into the homes of seniors, so that elderly people can enjoy lives filled with "health" and "hope." We supported implementations related to this exercise-at-home project and plan to establish home exercise models for aged individuals which encompass research, development, and promotion of home exercise courses; cultivation of senior trainers; development of home exercise models for seniors; and operation of physical exercise venues for seniors. Future extensions of this project include development of a mobile application in 2024, promotions in 2025, and competitions in 2026.	350,000
	Care for seniors	Comprehensive and diverse care for seniors project 500,000 Lunar New Year meal assistance 300,000	To provide comprehensive care, companionship, social resources, and community care for seniors living alone, we donated 7 meal delivery scooters to 5 centers to assist with delivering meals to mountainous areas, conducting visits, and other care services. We have optimized meal delivery services that span from Beitou in the north to Pulli in the south. We also supply "nutrition boxes for seniors" that help seniors maintain their health and prevent frailty. We also donated one mobile resource van that delivers daily necessities to remote regions and assists disadvantaged seniors in Taichung, Changhua, and Nantou. We further helped disadvantaged seniors and seniors living alone with home repairs, solving issues they had in their homes.	400,000
	Care for seniors	Embrace solitary seniors with continuous love	As part of our sustainable development actions, we provide home care, material support, meal deliveries, medical escort services, blood pressure monitoring, and other healthcare services to disadvantaged families to enhance "diet" and "health" standards of disadvantaged seniors in Taoyuan. We work to care for disadvantaged seniors, believing that we should "care for all elders as though they were members of our own families" as we bring the warmth of society to solitary, disabled, and demented seniors. We provide comprehensive local and community care for seniors through projects encompassing mental health, physical health, dietary health, environmental health, and social health. We hope to establish a care model based on dignity and respect by providing services to seniors in the community.	800,000
	Children	Grape King Bio "Sending Love to Remote Regions" Campus Renovation Project	Shihlei Elementary School is located in the remote mountains of Nahuy and has a high proportions of Atayal tribe members, skipped-generation groups, and low-income groups. As first graders begin living at the school after enrollment, we hoped to improve the quality of student learning environments by waterproofing and fireproofing the metal roofs of school dormitories; strengthening building safety and extending usage periods; and maintaining the integrity, usability, and safety of dormitories, facilities, and equipment so that teachers and students can enjoy better learning environments.	1,100,000
	Children	Grape King Bio "Sending Love to Remote Regions" Campus Renovation Project	Dongguang Elementary School, located in Guanxi (Hsinchu County), wanted to transform unused spaces into the best music and dance classrooms for children, as well as a preparation room and learning center for college students teaching at the school. Raised wooden floors were put in so that the students could have a comfortable, wide, and flat space. Full-length mirrors were also installed on the walls so that students could observe their own dance movements, and the ceiling lights were redesigned to provide balanced lighting for the entire space. The space can also be used to display student work, improve student learning environments and activities, and enable students to enjoy diverse experiences and be fully equipped for the future while learning about gratitude and giving thanks.	
	Children	Grape King Bio "Sending Love to Remote Regions" Campus Renovation Project	(1) Due to space limitations, work areas often have to serve multiple purposes in response to the requirements of sedentary and active activities. Desks and chairs cannot be fixed as they need to be adjusted constantly, so folding chairs and tables are often used. The current desks and chairs have been used for many years. We continue to purchase books and bookcases to create more reading opportunities for children, and use multimedia materials to make reading more diversified and interesting. (2) Established a smart classroom at Jiaye Elementary School. We purchased large LCD screens, washable blackboards, GoPros, webcams, and other equipment which could be linked to existing tablets and computers to form smart learning environments for teachers and students. This equipment enabled teachers and students to immediately find information linked to what they were learning in the classroom and facilitated remote learning.	

SDGs	Issues	Project Titles	Project Description	Grape King Bio Investments
	Environmental education	Environmental education program	Grape King Bio supports environmental protection, education, and promotion. We have made donations to the Taiwan RE-THINK Environmental Education Association, which builds interactive educational websites and teaching materials with innovative designs that integrate board games and design thinking concepts. Their materials have been promoted to schools all over Taiwan, and cover issues such as marine waste, plastic reduction, resource recycling, and circular economy. The Recycling Encyclopedia designed interactive and educational board games and websites around concepts such as “the myths of classification” and “the value of recycling,” enabling students to understand systemic factors behind resource recycling and changes that can be done on a personal level by playing games. This corresponds to SDG 12 “Responsible Consumption and Production.”	500,000
	Ocean conservation	Cetacean stranding rescue van program	We hope to help people from all regions understand marine conservation and protected species through an educational tour that brings people closer to the sea, cultivates a love for the sea, and spurs people into taking practical actions. We plan to host 30 classes on cetaceans and sea turtles in the three cities of Greater Taipei. Additionally, we donated a safe and reliable cetacean and sea turtle rescue van to aid rescue and rehabilitation of beached cetaceans by providing shelter, rehabilitation, and subsequent handling assistance while ensuring the safety of cetaceans, sea turtles, and associated personnel.	400,000
	Biodiversity	Wild animal rescue support program 500,000 Educational corridor exhibits 200,000	(1) We set conservation of wild animals as our core mission and work to promote our goals of ecological conservation, wildlife restoration, environmental protection, and biodiversity through rescue, rehabilitation, release, and professional field investigations as we pursue a balance between conservation and development. Grape King Bio has donated medical expenses required by 1,600 wild animals over the past four years, including fruits and vegetables, feed, live bait, nutritional supplements, materials for surgery and care, animal medications, autopsies, pathological examinations, and materials to enrich the environments of veterinarian hospital cages to enhance the immediate medical resources used by wild animals in the eastern region and increase the number of rescued wild animals. (2) We added physical animal specimens, interactive teaching aids, and self-guided teaching aids to expand the target scope of our educational corridor to schoolchildren below high school age, and provided venues for Taitung schools and family support organizations to host environmental educational sessions related to injured wild animals or wildlife conservation. Some specimens or teaching aids can also be lent out to campuses and tribes in remote regions for promotional use.	700,000
	Biodiversity	Restoration program for Taiwan oil millet	The program is based on food and agriculture education, and strives to integrate local knowledge and professional education. By teaching about the restoration of the “Taiwan oil millet,” we enabled children to participate in growing “future foods” while also gaining an understanding of the history and culture of their ancestors so they could become a protector of sustainable climate goals and take actions corresponding to SDG 13 “Climate Action.” We plan to establish exhibition rooms in campuses all over Taiwan as well as a demonstration area of around 20 pings for food and agriculture education, where we will arrange professional teachers to promote the Taiwan oil millet, invite tribe elders to participate in farming activities, promote local education by cultivating and training teachers, and finally disseminate these concepts domestically and overseas in hopes of restoring growth of the Taiwan oil millet both at home and overseas as it is a super crop which can adapt to climate change and regions lacking arable land.	500,000
	Biodiversity	Commitment to a sustainable Earth	To protect and establish low-altitude forests as well as expand community conservation areas, and build an environmental learning center for all, we implemented the habitat management program to protect and establish low-altitude forests, promote biodiversity, eliminate Mikania micrantha (an exotic species which kills other plants), and maintain environmental protection by establishing automatic infrared cameras at four activity hotspots for wild animals to provide round-the-clock ecological monitoring. Additionally, we aim to promote our environmental education program and build an environmental learning center for all which participates in environmental education classes of elementary schools, designs teaching activities, exchanges educational resources, and trains volunteer guides to strengthen environmental education and cultivate relevant sensibilities.	300,000

