



GRAPE KING BIO










CH5

Social Prosperity

Target Formulation | 5.1 Academic Participation | 5.2 Community Development | 5.3 Care for the Disadvantaged | 5.4 Companionship and Assistance | 5.5 Care for the Elderly

Target Formulation

	Care for Children	Food for the Disadvantaged Program	Expand Social Influence
Progress achieved in 2024	In 2024, we completed a campus needs assessment for underprivileged children and conducted donations, contributing a total of NT\$1.43 million to 12 schools.	For the 2024 underprivileged meal program, we donated to three organizations, serving a cumulative total of 20,190 individuals.	<ol style="list-style-type: none"> 1. In 2024, we have collaborated with four associations on social participation projects related to our core business. 2. We have confirmed the outcomes of all projects under each theme, including the resources invested and the number of beneficiaries.
Short-term Targets for 2025-2026	Donate at least NT\$1.40 million to schools for care of disadvantaged children.	Benefit at least 15,000 people under the Food for the Disadvantaged program.	<ol style="list-style-type: none"> 1. Increase industry-related community investments plans. Focus on social aspects.
Mid-term Targets for 2027-2028	Donate at least NT\$1.5 million to schools for care of disadvantaged children annually.	Benefit at least 16,000 people under the Food for the Disadvantaged program.	<ol style="list-style-type: none"> 1. Utilize our own technologies/expertise to develop long-term solutions to important issues (health, poverty, education, and so on). 2. Communicate benefits to stakeholders of social projects.
Long-term Targets for 2029 and beyond	Donate at least NT\$1.5 million to schools for care of disadvantaged children annually.	Benefit at least 16,000 people under the Food for the Disadvantaged program.	<ol style="list-style-type: none"> 1. Calculate social impacts of social projects. 2. Strengthen specific community investments projects based on the results of social impact assessments.
Corresponding SDGs	 	 	  

Social Inclusion

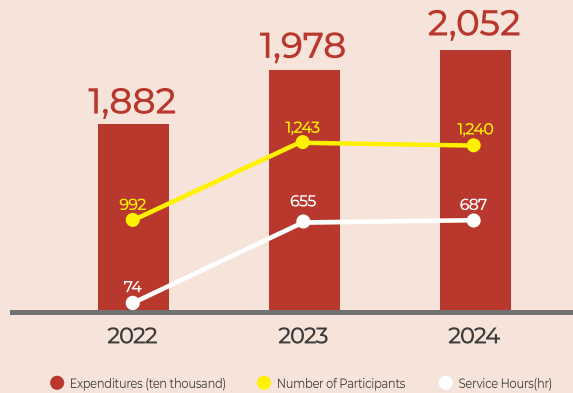
Community investments at Grape King Bio falls into five focus areas that form the cornerstone of our fulfillment of corporate social responsibilities.

Our philosophy for community investments: “Local investment, social contributions, and building social influence.”

1. Academic participation and strengthen competitiveness of future key talents
2. Community development and provide local support and care
3. Care for the disadvantaged and provide resources and counseling
4. Providing companionship and assistance to individuals targeted for self-reliance to enhance their daily living.
5. Care for the elderly and emphasize needs of senior citizens

We are committed to providing financial aid and learning resources to disadvantaged groups in society, and work to utilize our advanced bioscience technologies in continued research, development, and creation of products that will benefit society. We also plan to host and participate in various charitable activities to raise employee awareness of and involvement in social welfare. Grape King Bio community investments for the past three years are shown in the following table :

Grape King Bio Community Investments



Note 1: Includes expenditures for donations to government institutions, other clubs, and communities.
Note 2: Includes expenses from the Tseng Shui Chao Welfare Charitable Foundation.

Grape King Bio Employee Participation

Grape King Bio is active in community investments and formed the Grape Volunteer Team in 2013, gathering like-minded employees to participate in volunteer activities. Volunteer activities were hosted during work hours and our senior managers led our colleagues in performing volunteer tasks. A total of 1,240 volunteers and 687 service hours were invested in community investment projects in 2024.

Focus	Academic Participation	Community Development	Care for the Disadvantaged	Companionship and Assistance	Care for the Elderly
Targets	Disadvantaged schoolchildren and adolescents	Neighboring communities around factories	Disadvantaged groups	<ul style="list-style-type: none"> Individuals striving for independence Women and children suffering from trauma Physically or mentally disabled individuals 	The elderly
Assistance Provided	<ul style="list-style-type: none"> Financial support Community sponsorships Scholarships 	<ul style="list-style-type: none"> Long-term provision of local services Support for schools and other institutes Long-term care from volunteer teams 	<ul style="list-style-type: none"> Material and financial donations Meal support and rural companionship 	<ul style="list-style-type: none"> Companionship and respite services Independent living projects 	<ul style="list-style-type: none"> Care for the needs of elders and provide warm companionship Enrich life activities
Social Influence	Enhance local children's right to education	Promote mutual growth by providing assistance to local neighboring communities	Reduce inequality of social resources	Improve living standards for disadvantaged groups	Improve the health and wellbeing of the elderly

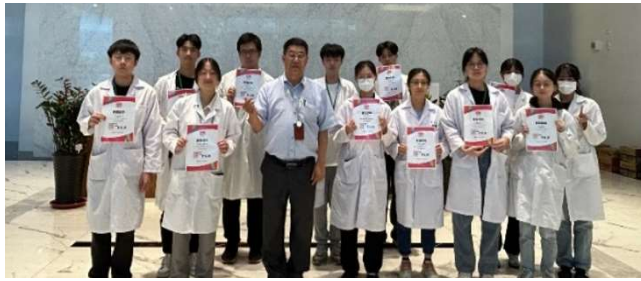


5.1 Academic Participation

5.1.1 Student Internships and Exchanges

We actively provide field trip opportunities to colleges and universities, and internships for winter/summer vacations and during semesters. A total of 212 students have interned at our factories over the past three years. This added to our intangible assets, allowed us to pass on our expertise to young students, helped students align with industry needs, and gave us a chance to screen and recruit excellent new employees. Currently, 15 of our previous interns have become full-time employees following graduation. The number of interns at Grape King Bio factories over the past three years are shown below:

Year	2022	2023	2024
Winter Vacation	23	20	16
Summer Vacation	40	35	24
During Semesters	32	10	12



5.1.2 Seed Talent Program (STP)

Grape King Bio emphasizes talent cultivation. Our Seed Talent Program (STP) provides young college and university students with opportunities to directly work on industrial projects while strengthening industrial-academic links. Our chairman personally guides Grape King Bio colleagues in leading students through all project stages from proposal to implementation, enabling them to gain practical experiences beyond academic textbooks. This program was initiated in 2014. As of 2024, a total of 144 interns have participated in this program and worked on 25 projects.

Each batch of student teams is given different topics that they work on from activity planning, design, production, and execution so that they can fully understand each implementation process and develop problem-solving capabilities.

Results for 2024:

- ◆One batch of students
- ◆Number of interns: 9
- ◆Resources invested: 256 hours of work time
- ◆Participating supervisors and units: Chairman, General Manager's office, ESG Committee (Social Welfare Implementation Team), Marketing Planning Section

5.1.3 Academic Sponsorships to Support Education for Schoolchildren

Support for the National Health Research Institutes

Grape King Bio has donated NT\$1.1 million to the Innovation and Incubation Center of the National Health Research Institutes for the cultivation and mentoring of startup teams from 2021 to 2024. By assisting and mentoring these startups, we aim to develop future collaboration opportunities with companies in various fields. Additionally, in 2024, we supported the NHRI Science Popularization Program with a donation of NT\$30,000 to promote scientific education to the public. Our company's nutritionists also participated in the "Healthy Aging Fun Fair" event to promote healthy living guidelines to the elderly.

Ren'ai Foundation

Starting from 2007, we at Grape King Bio made it our mission to care for local schoolchildren. We donate to the emergency relief funds of elementary and middle schools (Long Xing Junior High School, Pingzhen Junior High School, Zhongli Junior High School, Lung Gang Elementary School, Beishi Elementary School, and

others) each year, and have donated a total of NT\$6,900,000 as of year-end 2024. We are committed to helping disadvantaged schoolchildren gain an education, ensuring that their studies are not affected by external factors. We hope that our efforts can provide actual help to disadvantaged schoolchildren.

Grape King Bio Scholarships

We encourage talented youth from disadvantaged families to continue their studies and help to alleviate their worries. Grape King Bio scholarships for junior high and high school students were established in 2014 to support hardworking students. As of year-end 2024, we have sponsored a total of 16 high schools and 61 young students, donating a total of NT\$2,600,000 to help disadvantaged students continue to work hard on their studies. In the future, we hope to expand our scholarships so that we can also help college students and ensure that talent cultivation is not limited by external factors as part of our contribution to society.

Sponsorships of School Clubs to Encourage Diversified Development of Schoolchildren

Talent cultivation is not limited to academic studies, and we also attach great importance to student participation in school clubs. We encourage diversified development of schoolchildren and work to expand the scope of sports and arts activities. We supported 12 schools from 2013 to 2024, donating a total of NT\$6,404,000.

"Mini Grape Camp" Workplace Experiences

Grape King Bio has hosted a number of parent-child workplace experience activities and organized the first "Mini Grape Camp" during the summer vacation of 2020. The children of our colleagues were invited to experience workplace environments at our Pingzhen Factory. Children are always curious about where their parents work, so this creative "Mini Grape Camp" event allowed the children of our employees to understand Grape King Bio's culture as well as the environment and location where their parents work. On the day of this event, we not only introduced Grape King Bio, but also allowed these children to dress in clean room suits and experience air showers so they could understand their parents' work conditions. At noon, we invited these children to our employee canteen to taste the catered meals, following which there was a visit to our Tourist Factory, a scavenger hunt which communicated health concepts, and DIY chocolate and ice-cream activities. Our Chairman presented certificates to the children who finished the scavenger hunt, and also took a group photo to commemorate the event.

Grape King Bio attaches great importance to the children of our employees and will continue to host "Mini Grape Camps" in the future to bring happiness to these children. We continued to host the Mini Grape Camp in 2024 for a total of 85 attendees.

5.2 Community Development

5.2.1 Grape Volunteer Team

To promote social welfare, Grape King Bio formed the Grape Volunteer Team in 2013, gathering like-minded employees to participate in volunteer activities. Volunteer activities were hosted during work hours, and we provide flexible compensatory time for employees who are willing to participate in volunteer activities outside of working hours. Grape King Bio managers personally led the Grape Volunteer Team in performing volunteer tasks.

Social Volunteers

■ Andrew Charity Association - volunteers for food boxes packaging

In collaboration with this association, Grape King Bio's Chairman led the Pro-Partner volunteers to assist in sorting and packing food and resource boxes to feed disadvantaged children. We also invited one supplier to participate together. Since 2018, we have continuously participated in this volunteering activity for 6 years, totaling 9 sessions, with colleagues contributing 323 hours of service.

■ Double Bliss Welfare And Charity Foundation - volunteers for Senior Sports Meet

This year, our volunteers participated in the Senior Sports Meet organized by the Double Bliss Welfare And Charity Foundation, which combined sports and fun activities. This event aimed to assess the physical and cognitive training effectiveness of seniors through the participation of those with dementia accompanied by our volunteers. Since 2023, a total of 10 volunteers have contributed 30 hours of service.

■ Chen Jen Institute for the Disabled - volunteers for outdoor activity companionship

In 2024, the Grape Volunteer Team once again led colleagues to participate in outdoor activities for individuals with Down Syndrome. This year, our volunteer team accompanied 30 individuals with Down Syndrome on a day trip to visit the aquarium and experience the mysteries of the ocean world. This event aimed to provide opportunities for disabled people to experience a variety of leisure activities. Since 2013, we have continuously hosted this volunteering activity for 12 years, totaling 22 sessions, and supporting a total of 975 individuals from 5 social welfare organizations, with colleagues contributing 2,382 hours of service.

Environmental Volunteers

■ Canvassing Event in the Community

The Grape Volunteer Team has organized an annual canvassing event since 2018, but we temporarily suspended this event due to the pandemic in recent years. In 2023, we hosted once again the canvassing of areas around our factories to fulfill our corporate social responsibilities. We have continuously held this event for 7 years, totaling 6 sessions, with 525 colleagues contributing 1,004 hours of service.



■ Taiwan Environmental Information Association - Natural Valley Habitat Maintenance Volunteer Activity

This year, our Chairman led colleagues to participate in activities aimed at understanding Taiwan's natural ecology, eliminating exotic species such as Mikania micrantha, protecting and establishing low-altitude forests, promoting biodiversity, and demonstrating our commitment to "protecting biodiversity and natural habitats." Since 2023, a total of 42 volunteers have contributed 126 hours of service.

■ Taiwan RE-THINK Environmental Education Association - Collaborative Beach Cleanup with Suppliers

Grape King Bio's volunteers, along with our 11 suppliers and the Taiwan RE-THINK Environmental Education Association, joined our first beach cleanup event at Houcuo Harbor in Taoyuan and worked together to remove marine debris from the beach. Since 2023, a total of 85 volunteers have contributed 170 hours of service, clearing 353 kilograms of waste.



5.2.2 Community Care

Involvement of Local Communities

In 2024, we successfully conducted community interaction activities near our factories. Upholding our annual traditions, we sponsored key festivals, such as the Mid-Autumn Festival celebration, providing funding and gifts to share the joy with local residents. This year, we also partnered with Zhenxing Village in Zhongli District to support the Ghost Festival activities at Yimin Temple, making charitable donations to offer blessings to the community. Our other contributions included providing venues for neighborhood health check-ups, co-organizing blood donation drives with residents once every half year, and hosting canvassing events in the community, where both our funds and employee volunteers actively participated.

This year, we further promoted healthy living and active aging through a community walking event open to all residents. The event received an overwhelmingly positive response, with a total of 240 participants, including employees, community members and their families. Apart from achieving fitness goals, participants also gained valuable insights into food safety and health, effectively sharing our values with the community.



Mother's Day Pop-Up Charity Event

We learned that roses handmade by Down syndrome individuals lacked a sales channel, so we organized an event which gifted flowers to elementary schools and invited our colleagues to support the “Chensenmei Social Welfare Foundation.”

These Mother's Day gifts taught young children about charity, helping others, cherishing what they have, and making contributions. From 2019 to 2024, a total of 8 recipient organizations have been served, benefiting a cumulative total of 5,669 individuals.

"Save the Earth with A Low-Carbon Diet World Earth Day Activity

Starting in 2017, Grape King Bio began hosting “Save the Earth with A Low-Carbon Diet” activities at all factories. We began promoting concepts relating to low-carbon diets and environmental protection to our employees beforehand, and low-carbon lunches were served on World Earth Day and World Food Day. We also worked with “Ruth Society for Disability Services” on these days to source organic vegetables grown by individuals with Down syndrome. In 2024, a total of 970 participants attended from the entire factory across 2 events. As of 2024, over the course of 6 consecutive years, a total of 11 events have been held, with a cumulative attendance of 4,890 participants.

Faith for Animals (High-intensity stray sterilization project)

Starting in 2020, we began working with Faith for Animals to carry out a high-intensity sterilization project on stray dogs in Taoyuan City, which we hoped to help to sterilize stray female dogs, reduce problems caused by stray dogs, greatly lower social costs, and prevent countless animals from suffering. We achieved our goal of sterilizing more than 80% of stray female dogs in Taoyuan City. As of 2024, provided such services for over 2,100 times.

Other local community items in 2024 were as follows:

Sponsored physical examinations

Provided site, manpower, material support, and electricity for physical examinations of Zhenxing Village residents near the Zhongli Factory.

Blood drives

We have hosted blood drives since 2018. Borough heads of regions near our Zhongli Factory and Pingzhen Factory were invited to help us promote these events. As of 2024, we have cumulatively hosted 19 events attended by 1,265 employees and local residents, collecting 1,797 bags of blood.

Online charity stalls

We invited local social welfare organizations in Taoyuan to set up online stalls on our website. A total of 3 organizations were invited to our 3 events.

Spreading love in the community

Grape King Bio began purchasing handmade Moon Festival gift boxes from bakeries run by disabled people starting in 2018. We have now worked with 7 associations for disabled people resulting in a total procurement of 1,290 boxes. In 2024, we purchased 150 gift boxes from the Baby Development Center and gave these out to neighboring communities.

In 2024, our expenses for sponsorships and environmental improvement activities came to NT\$2,632,384. Our investment items and expenditures over the past three years were as follows:

	Item	2022	2023	2024
Sponsorships	Dragon Boat Festival Gifts	480,162	538,929	557,802
	Moon Festival Gifts	540,327	546,618	558,501
	Various Activities	251,070	226,605	263,391
Zhongli Factory	Zhenxing Village-Moon Festival Cash Gifts	100,000	100,000	100,000
	Zhenxing Village-Community Safety	200,000	200,000	200,000
Pingzhen Factory	Beixing Village-Moon Festival Cash Gifts	100,000	100,000	100,000
Subtotal		1,671,559	1,712,152	1,779,694
Environmental Improvements		83,000	707,700	852,690
Total		1,754,559	2,419,852	2,632,384

Local Community Sponsorship and Environmental Improvement Initiatives

1. Each factory shares festival gifts with nearby communities during the Dragon Boat Festival and Mid-Autumn Festival.
2. Sponsored Moon Festival dinner parties in Longxing, Longde, Zhenxing, and Beixing villages in Taoyuan City.
3. Community cleanup activities in Beixing, Zhenxing, and Longxing villages in Taoyuan City.
4. Local community donation for the Zhongyuan folk activities in Zhenxing Neighborhood, Taoyuan City.
5. Sponsorship of beverages for the Ice Skating Association's Presidential Cup.
6. Sponsorship of beverages for local council members' blood donation activities.
7. Noise improvement project for the sewage pump at the Pingzhen factory.
8. Improvement project for rainwater collection at the Pingzhen factory.
9. Odor improvement project for wastewater environment at the Zhongli factory.

5.3 Care for the Disadvantaged

5.3.1 Food Assistance

Meal Packages

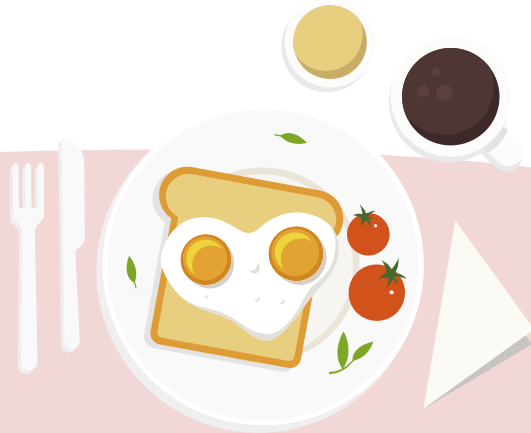
Starting in 2017, Grape King Bio began working with Andrew Charity Association to make regular donations of foods and other resources. As of 2024, we have donated a total of 3,900 food and resource boxes, helped 9,400 families, and assisted 15,600 people.

Winter and Summer Vacation Meal Coupons

Schools are closed during winter and summer vacations, and therefore no school lunches are provided. Starting in 2018, Grape King Bio began working with the World Peace Association, providing donations to set up meal services for disadvantaged children during the winter and summer vacations, enabling them to redeem food coupons for regular meals so that they would not go hungry. As of 2024, we have supported 546 students and provided 22,800 instances of service of service.

Charity Breakfast Program

Starting in 2020, we began supplying nutritious daily breakfasts to disadvantaged children and youth living in rural areas of Tainan City by donating NT\$50 each day to purchase their breakfasts, providing them with breakfasts during the semester, weekends, and summer and winter vacations so they could maintain their strength for learning, enhance their learning capabilities, and increase their future competitiveness. In 2024, we made donations to 36 disadvantaged children in 3 schools and supplied 13,140 meals. As of 2024, we have assisted 129 disadvantaged children and supplied 47,085 meals.



5.3.2 Medical and Healthcare Assistance

Grape King Bio collaborated with various units in 2024 to provide medical care-related assistance as follows:

Medical Resources Subsidies

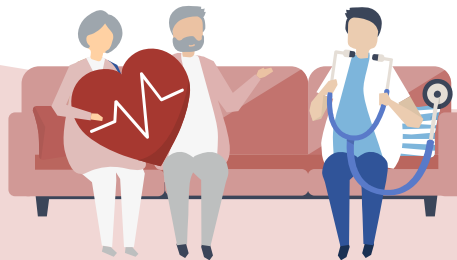
Grape King Bio worked with the Huizhong Medical Relief Foundation to provide medical subsidies to disadvantaged patients at the Taipei Veterans General Hospital Taitung Branch so they could enjoy equal opportunities for healthcare even though they were unable to pay their medical expenses. As of 2024, we have assisted 128 people.

Breast Cancer Patient Subsidy

Since 2021, Grape King Bio has donated to the Taiwan Clinical Oncology Research Foundation for “Breast Prostheses and Brassiere Assistance” and “Assistance Specific Fund” projects to assist more breast cancer patients in regaining balance, confidence, and beauty, as well as to help those who are financially unable to afford medical expenses enjoy equal opportunities for healthcare. As of 2024, we have assisted a total of 116 individuals.

Annual program for epidermolysis bullosa patients

Starting in 2019, we began supporting Dystrophic Epidermolysis Bullosa Research Association Taiwan, collecting medical items required by patients with moderate to severe epidermolysis bullosa and providing home care services for patients with severe epidermolysis bullosa to reduce the burdens on their families. As of 2024, we have assisted 2,186 people.



5.3.3 Learning Support for Rural Regions

Reindeer Island Tour

Starting in 2016, Grape King Bio began collecting Christmas boxes for disadvantaged schoolchildren in rural schools through the “Reindeer Island Tour” project to provide mental support for these children and promote moral education while spreading warmth and happiness. We also funded facilities required by rural schools to fill resource shortages. As of 2024, we have donated Christmas boxes to 1,425 people, and purchased facilities and equipment for 27 rural schools.

Christmas Wish Project

Starting in 2017, Grape King Bio began hosting a series of Christmas events for children, seniors, disabled people, and women, to help beneficiaries of different institutes experience warmth and enjoy this festival. We hope that these events can bring more people together to care for disadvantaged groups and expand our social influence. As of 2024, we have assisted 100 organizations and more than 6,600 people, and donated a total of NT\$7.53 million.

Experiential Activities and Wishlists for Disadvantaged Schoolchildren

When providing support to local schoolchildren, Grape King Bio discovered that many disadvantaged schoolchildren came from families who could not afford to pay school fees and were unable to give these children normal childhoods. Therefore, we began organizing “Mini Grape One-Day Tour” experiential activities starting in 2014, enabling schoolchildren to experience diverse lifestyles, build their confidence, and cultivate gratitude and care for others. These activities enhanced parent-child interactions and gave the children hope for the future. We also began organizing “Wishlist” activities starting in 2016 to fulfill the wishes of these disadvantaged schoolchildren, bringing them hope for the future and helping to provide them with daily necessities. As of 2024, we have assisted 682 people.

Ti-Hwei Children's Home

Ti-Hwei Children's Home is a private orphanage located in Tianmu (Taipei) which attaches great importance to sports education and believes that children should learn by doing and reflecting. They host outdoor adventure camps every year during the summer vacations to help their residents learn independence. Grape King Bio began supporting these experiential camps in 2015. Each year, our colleagues serve as corporate volunteers and participate in these activities alongside the children. As of 2024, we have assisted 113 people, invested 813 volunteer service hours, and donated NT\$3,730,000.

5.4 Companionship and Assistance

5.4.1 Care and Independence for Disabled People

Companion Care and Respite Services

Grape King Bio hosted a series of “Companionship & Respite” activities starting in 2013 and provided volunteer companions for individuals with Down Syndrome. This not only provided opportunities for positive social interactions, but also helped institute caregivers. As of 2024, we have continuously hosted this volunteering activity for 12 years, totaling 22 sessions and supporting a total of 698 individuals from 5 social welfare organizations, with 2,382 hours of voluntary service.

Items related to assistance for disabled people in 2024 were as follows:

Monetary Donations for Patients with Down Syndrome

Canaan Disability Home cares for severely disabled patients from disadvantaged families. Starting in 2017, Grape King Bio helped these patients with Down Syndrome plant gardens and participate in green healing classes by planting fruit trees. These patients weeded, plowed soil, applied fertilizer, and achieved green healing by caring for their farms. They also sold the Yuherbau litchis and used the proceeds thereof as monetary donations for severely disabled individuals to purchase daily necessities. As of 2024, we have assisted a total of 288 individuals.

Hope Farm - Assistance for Children with Developmental Delay

Starting in 2018, Grape King Bio donated organic fertilizers to the Hope Farm of Ruth Society for Disability Services for six consecutive years, aimed at providing vocational training in vegetable cultivation for children with developmental delay. This donation helps them acquire valuable expertise, ensures the stability of vegetable production at the Hope Farm, facilitates the supply of vegetables to their organization and potentially enables external sales. As of 2024, we have assisted a total of 847 individuals.

Arts promotion for disabled people

Starting in 2020, Grape King Bio began making donations to the Arts Promotion Association for the Disabled R.O.C. to support accessible arts and provide diversified employment opportunities for disabled people. As of 2024, we have assisted a total of 533 individuals.

Assistive Devices

Starting in 2020, Grape King Bio worked with the Eden Social Welfare Foundation to purchase assistive devices for disabled people. We aim to provide support to those with disabilities in vocational, psychological, leisure, and other aspects and help them achieve autonomy and self-reliance based on the concept of independent living. As of 2024, we have assisted a total of 10,464 individuals.

Life Skills Training and Diversified Support Services

Since 2018, Grape King Bio has donated to Taoyuan City organizations such as the Renyou Sanatorium, the Happiness Social Welfare Foundation, and the Baby Development Center to improve the living conditions of individuals with Down Syndrome, with the hope of enabling disabled individuals to care for themselves and alleviate barriers. As of 2024, we have assisted a total of 108,904 individuals.

5.4.2 Self-Reliance for Women Care and Assistance for Abused Women

In recent years, the topics of sexual assault and domestic violence have received increasing attention. Grape King Bio worked with the Taipei Women’s Rescue Foundation, Garden of Hope Foundation, and Modern Women’s Foundation to provide assistance and support by hosting lectures related to law and psychological support. We have also hosted long-term companionship workshops to help abused women become self-reliant. Starting from 2022, we supported the Garden of Hope Foundation and helped women realize their strengths and support each other through annual returns to their parental homes. These activities helped the women understand that they were not alone, established a support system, and encouraged them to build brighter futures. From 2018 to 2024, a total of 6,670 service instances were provided.



5.5 Care for the Elderly

5.5.1 Care for Seniors

Starting in 2018, Grape King Bio assisted the Hondao Senior Citizen’s Welfare Foundation in extending their safety net to provide care for the hungry and malnourished. We also delivered meals for elderly people living in 11 administrative districts in Taichung City who were underprivileged, lived alone, or had mobility issues. As of 2024, we have assisted 111 elders and supplied 13,774 meals.

Grape King Bio also continues to support the Hondao Senior Citizen’s Welfare Foundation in promoting sports activities for elders and encouraging seniors to exercise. We formed a baseball league platform and formulated competition rules for elders, giving them a chance to leave their homes and step into baseball stadiums. We began hosting baseball tournaments for seniors starting in 2019, and our colleagues also formed teams to play against these seniors. As of 2024, we have hosted 5 games, assisted 197 people, and invested 246 service hours.

5.5.2 Companionship for Lunar New Year

Grape King Bio provides care to disabled, demented, and dependent seniors. We have continued to care for disadvantaged seniors living alone since 2016. Our volunteers care for and visit these seniors, personally delivered Lunar New Year meals, and assisted the Huashan Social Welfare Foundation in organizing a year-end banquet so that these seniors could feel our love and care on the eve of Lunar New Year. As of 2024, we have assisted 3,380 people, and made cumulative donations of NT\$3.91 million.

Starting in 2019, Grape King Bio launched “Happy Charity Boxes” containing worship items for Ghost Festival. We have also worked with Huashan Social Welfare Foundation to assist elders living alone in communities around our Pingzhen and Zhongli factories, providing meal assistance to elders living in Jinling Road and Longgang District to prevent them from going hungry. As of 2024, we have assisted 180 people.

In 2024, Grape King Bio worked with different organizations on the following senior care program:

Senior Health Program

Since 2021, Grape King Bio has been working with the Double Bliss Welfare and Charity Foundation to provide gym training for frail and demented seniors in the community, helping them fend off or delay the development of disabilities or dementia. We maintain a ratio of 3:1 for seniors and youth coaches while providing in-depth health and nutrition information that can effectively help prevent disabilities and delay dementia. In 2023, the foundation further hosted the Senior Sports Meet, which combined sports and fun activities. Our volunteers accompanied seniors with dementia to participate in this event to assess their physical and cognitive training effectiveness. As of 2024, we have assisted a total of 2,256 individuals.